



Thank you for registering for the event at WRLS on Sunday 7/19 and/or Sunday 7/20/20. If you were at Thunderhill last weekend, the weather in Monterey will be downright chilly in the mid 60's.

Please click on the link to review important policies regarding your day with HOD.

<https://www.hookedondriving.com/important-policies-and-forms>

Check out the attachments for the Flag Review, New Drivers What to Expect sheet and the schedules for each day.

Amid the COVID-19 changes, WRLS has a strict set of guidelines on how we will operate the event. The changes will affect everyone:

- HOD must provide a registration log to the track **PRIOR** to the event. It must contain the vehicle license plate number that you will be driving into the paddock. If towing, it's the tow vehicle plate.
- Paddock entry is limited to ONE driver and ONE family member only, per registered vehicle. I must have their full name, address, phone number and the two waivers sent to me by 7/16/20. Picture ID or driver's license may be used for verification.
- **Please reply back to this email with your license plate number and the guest info.** If you don't get this info back to me before the event, you will have a different, longer entry process.
- Only one person is allowed in the vehicle while on track. No passengers on track.
- **Masks must be brought with you, and worn at all times when outside the car.**
- HOD must provide a paddock layout map of where participants are in the paddock. HOD staff will be helping with the parking so we are in compliance. Parking will be first come first parked, if you want to park near a friend... come through the gate together.
- Paddock layout must have vehicles to be spaced at least 8' feet apart. (See diagram below)
- Temperatures will be taken at the gate - Please do not come if you aren't feeling well. Contact TeriB@hookedondriving for options.
- Social distancing at 6' will be required at all times. The park will have people in the paddock monitoring this. No more than six people will be allowed in one social distancing area.

### Event Logistics:

- There is no overnight parking in the paddock.
- Limited access on Friday night from 6pm to 8pm to drop a car or trailer off only. No access to garages before Sunday morning.
- Gate opens for participants at 7:00am on both days.
- **Check In is now a staggered process, by run group.** Check the schedule for your time.  
**C at 7:15 B at 7:35 D at 7:55 A at 8:15**
- **Check-in will be at the HOD trailer near the grid.**
- All drivers will be given an envelope which has your name tag, run group letter, lunch ticket and a schedule. If you paid online for car numbers, you will get them near this location. If you pre paid for a guest lunch, that lunch ticket will be in your envelope. Wristbands will be different colors for each day. Green is for Sunday and purple is for Monday.
- **PLEASE make sure the driver wristband is on your left wrist.**
- All run groups will have separate meetings so we can maintain social distancing guidelines set by WRLS.
- Group A drivers will be invited and need to attend a Zoom meeting. An invite will be sent to individual drivers. We will run our driver download presentation from this single online presentation.
- HOD will be providing water, but will not be in an ice chest. It will be set out so that you can grab and go, and not fish around in the cooler. If you prefer ice cold water, we recommend you bring a cooler with ice for yourself.
- Helmets must be SA rated and be 2010 or newer. **NO motorcycle helmets** please. If you don't have a 10 or 15 HOD sticker yet, please bring your helmet to check-in for inspection. Rentals available for \$30 for the day, or \$50 for two day rental. We now also have HANS devices for rent for \$50 per day.
- If you have a tow hook install it prior to going on track.
- All cars must have 6-inch numbers on each side. HOD will have numbers available (\$5 for a set). Already have numbers? Prefer bringing blue tape? You are good to go!

We are working with the A Train's BBQ for lunch. **There is no seating available near the cafe, you must pick up your lunch and take back to your paddock spot.** Lunch will be served starting at 11:30 to 1:40. If you are done with your morning track sessions, head on over to get your lunch so that we can maintain social distancing.

**No alcohol to be consumed anywhere on track property before the final checkered flag.**

## Thank you on behalf of David Ray and the HOD Team!

If you have **any** questions about the event, you're unsure of the newest COVID guidelines as set forth by WRLS, feel free to email or give me a call. We look forward to seeing you at the track!!!

Teri Barrett

Operations Manager

Ph (707) 495 0374

Fax (707) 762 9113

[terib@hookedondriving.com](mailto:terib@hookedondriving.com)

PO Box 2966, Petaluma, CA 94953-2966

<https://www.hookedondriving.com>



## Head and Neck Restraint Requirement

As of 1/1/19, HOD nationally, requires FIA or SFI certified Head and Neck Restraints for any drivers and/or passengers in cars equipped with 5 or 6 -point harnesses during an HOD event. This does NOT apply to cars utilizing stock, 3-point seat belt systems. |

Currently, approved head and neck restraint systems are:

- NecksGen
- HANS
- Simpson Hybrid S
- Schroth SHR Flex
- Stand 21 Ultimate, Hitech, and Club Series
- Z Neck Tech (Zamp)

HOD will not require or prohibit the use of these systems with 4-point harnesses, and notes that the Schroth ASM 4-point system is the only one certified as proven to provide anti-submarining protection. Further, the Simpson Hybrid S is currently the only system that has been certified to provide restraint functions with 3-point, 4-point, as well as 5 or 6-point systems.

There will be a one event grace period for those who did not get this notice.

**Thank you for choosing Hooked On Driving! This page should give you a good idea of  
What to Expect when you arrive at WeatherTech Raceway Laguna Seca**

- There is no power available at the track, unless you rent a garage, and anyone plugging into a power elsewhere on the property could have their car towed by the track. The track at this time doesn't have a place to charge electric vehicles, unless you rent a garage and have the proper converters.
- It is best to arrive with a full tank of gas. You will use a lot during the day. Gas is available at the track, but is more expensive than at gas stations. Watch your gauge during the day, if you are much below ½ tank, it's a great idea to fill up. Please do not run out of gas on the track!!!
- Follow the entrance from Highway 68 up the hill. At the fork, just past campgrounds, keep right. The entrance to the paddock is farther into the park. When you arrive at the paddock gate you will be met by a track employee and ask you and your guest to sign a track waiver. There is no charge at the gate and this waiver is just for the track.
- Once the waiver is signed you will be directed into the "paddock" which is really just the parking lot. You will see how other cars have parked or you can ask one of our meet and greet teams with yellow shirts and big smiles to help you find a spot. They can also answer any questions you might have. Driver check-in will be near the Hooked On Driving Trailer and flags.
- After you park you will want to empty your car of all loose gear. Some folks bring a plastic tub and place their gear in it. Your gear will be OK for the day, just on the ground near your car. The track is asking us to have one row of cars, facing the garage building, then a drive lane, then another row of cars. HOD staff will be there to help you get parked. Your personal space will be the 8' on the drivers side of your vehicle. See diagram at the end of this sheet.
- Next you should bring in your helmet to check-in. If you have not completed the E-Signature forms online, you will be asked to complete a self tech sheet for today's event. Check out the HOD website, top right corner, will be your account.
- **NOTE:** Your helmet must be a SA2010 or newer helmet. NO "M" (motorcycle) helmets are allowed.
- At check-in, you will get your run group letter, a lunch ticket and your driver's wristband. Schedules, track maps, flag review sheets are all available at the check-in desk.
- 6" numbers are required on both sides of your car. Vinyl numbers are available from HOD for \$5/set. If you prefer to bring blue tape and do it yourself... all good!

- When you get back to your car, place the number and letter stickers on the outside, upper passenger side of your windshield. See other cars in the paddock for guidance for placement if needed.
- Don't forget, windows must be down whenever you are on the track.
- Check your event schedule for the time of the all drivers meeting and location. This may change from track to track, so find out before, so you're not late. When you get to this meeting, your car should be 100% ready to go on track, car empty, stickers on windshield, your wristband. Individual group meetings will break out from the all drivers meeting. Most group leaders will let you know when there are going to be downloads. Please check with them to verify.
- There are different passing rules for each run group. Your group lead will be very specific on where those zones are, and how we run our passing protocols.
- After you're on track session, your group lead will let you know about download meetings. These happen immediately after your driving session.
- The grid is where you will line up before heading out on track. HOD releases the faster, more experienced drivers first. At WRLS this is the left side rows. The far right will be the last to be released on track. You can arrive at grid after the run group before you has departed.
- Lunch for the registered driver is included in your registration fee. Lunch starts at 11:30 and ends about 1:30. If you are done with your morning track sessions and downloads, head over to the cafe.

Our goal is for you to have fun, learn about your car and to be safe. If you have concerns, ever, please speak to your group leader, or Teri Barrett, Operations Manager and we will do what we can to make it right!

We hope you have a blast with Hooked On Driving! A day or two after the event, expect an email from us with a link to our Quality Control Survey. Please take a few minutes and tell us if we met your expectations.

**Thank you!!!**

# Paddock Parking Layout for WRLS amid COVID guidelines

GARAGE BUILDINGS GARAGE BUILDING GARAGE BUILDING **Turn 11**

---

DRIVE LANE / FIRE LANE

---

↑Car↑Car↑Car↑Car↑Car↑Car↑Car↑Car↑Car↑Car↑Car↑Car↑Car↑Car↑Car↑Car

---

DRIVE LANE / FIRE LANE

---

↑Car↑Car↑Car↑Car↑Car↑Car↑Car↑Car↑Car↑Car↑Car↑Car↑Car↑Car↑Car↑Car

---

DRIVE LANE / DRIVE LANE

---

↑Car↑Car↑Car↑Car↑Car↑Car↑Car↑Car↑Car↑Car↑Car↑Car↑Car↑Car↑Car↑Car

---

DRIVE LANE / FIRE LANE

---

↑Car↑Car↑Car↑Car↑Car↑Car↑Car↑Car↑Car↑Car↑Car↑Car↑Car↑Car↑Car↑Car

Trailer / Trailer / Trailer / Trailer / Trailer / Trailer / Trailer / Trailer / Trailer / Trailer / Trailer / Trailer / Trailer / Trailer

---

DRIVE LANE / FIRE LANE

---

↑Car↑Car↑Car↑Car↑Car↑Car↑Car↑Car↑Car↑Car↑Car↑Car↑Car↑Car↑Car↑Car

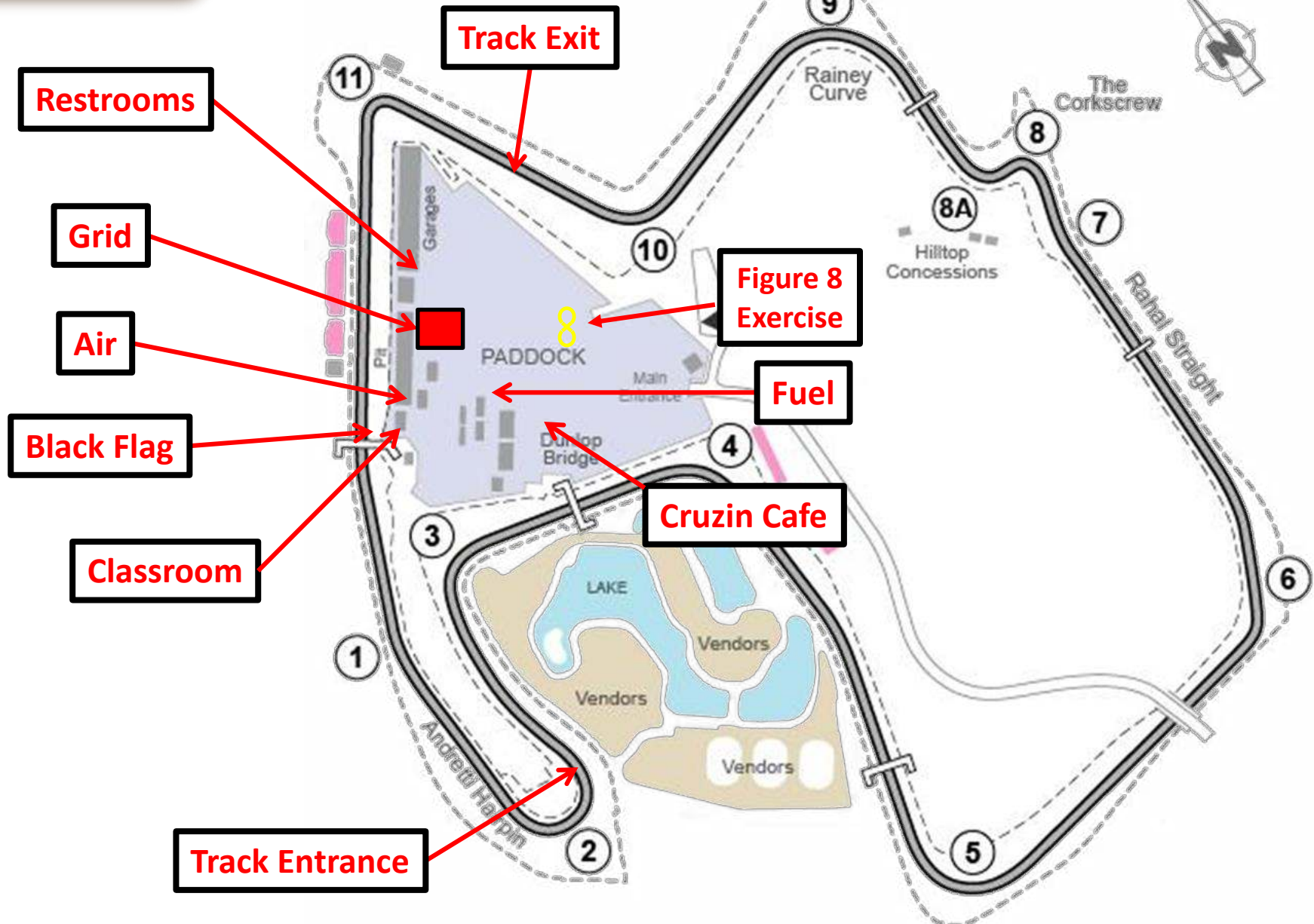
Trailer / Trailer / Trailer / Trailer / Trailer / Trailer / Trailer / Trailer / Trailer / Trailer / Trailer / Trailer / Trailer

Single rows of cars.

All vehicles must be parked facing the garage building.

The space on your driver's side is your 8' of space between vehicles.

# Key Locations





# WeatherTech Raceway Laguna Seca

**HOT** Passing Rules

## Group A and B

All Passes on the Left

Point-By Required, One for Each Car

Passing Zones: T11-1, T4-5, T5-6, T6-7, T10-11

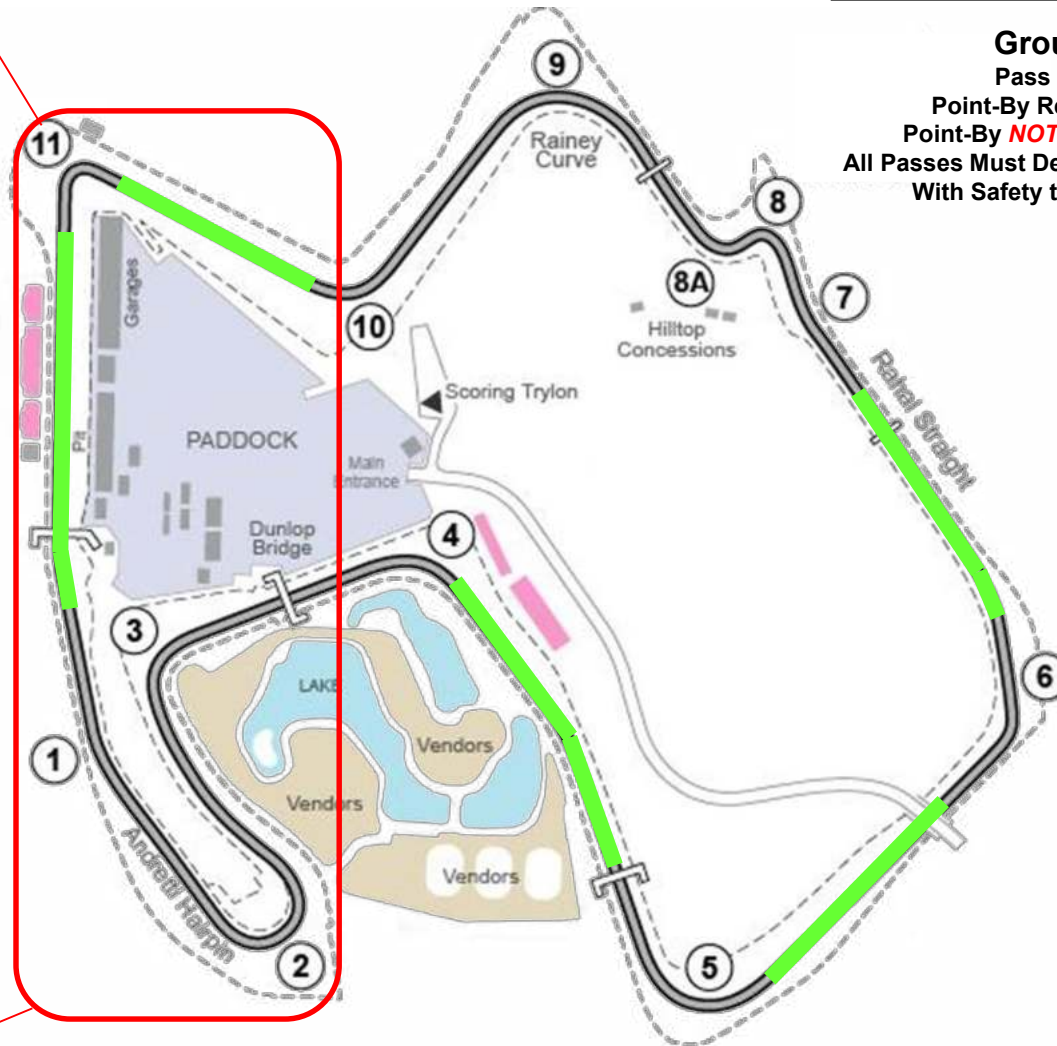
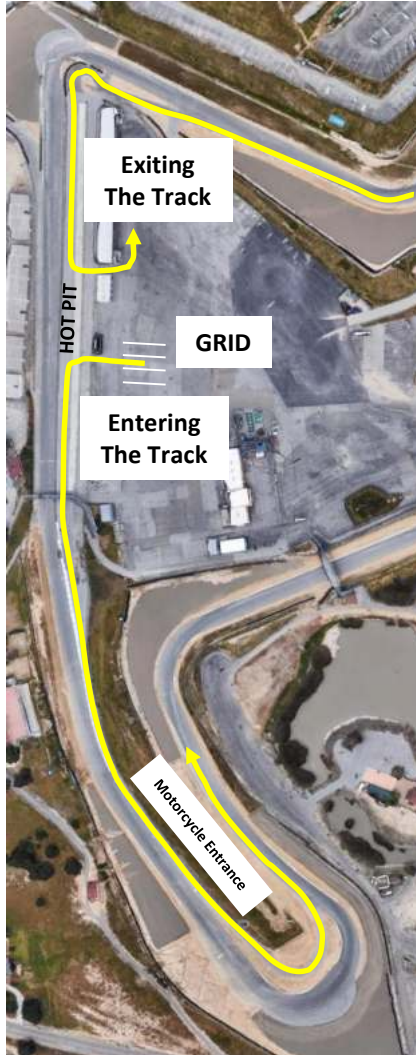
## Group C and D

Pass on Either Side

Point-By Required for Group C

Point-By **NOT** Required for Group D

All Passes Must Demonstrate Good Judgment  
With Safety the Over-riding Factor

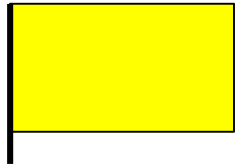




# Flag Review



**Green Flag - Track Open**



**Standing Yellow Flag** – ABSOLUTELY NO PASSING until completely passed the incident and a manned flag station with no Yellow flag. There may be several yellow flags before the incident. SLOW DOWN, NO PASSING.

**Waving Yellow Flag** – Caution, incident is very near. Slow down, be prepared to stop. ABSOLUTELY NO PASSING until completely passed the incident and a manned flag station with no Yellow flag.



**Black Flag Waving at YOU** – Return to hot pits to talk with HOD official.

**Furled Black Flag** – Warning that YOU are driving in an unsafe manner and that you need to maintain control.

**Black Flag Waving at ALL Stations** – Clear the track, complete the lap and return to the hot pits for instructions.



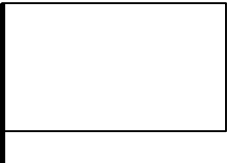
**Red Flag** – Emergency! Come to an immediate and controlled stop on the side of the pavement in a safe location and in view of a manned flag station. Emergency vehicles will be on track. NO CREEPING, stay stopped and remain in car with helmet and belts on until instructed to continue by a flagger, usually with a waving black flag. Continue with extreme caution.



**Passing Advisory Flag** – A faster car is approaching you and may want to pass. Check your mirrors and be prepared to allow a pass. Some run groups have specific passing zones and some groups require a point-by to pass. Be you know the passing rules for your run group.



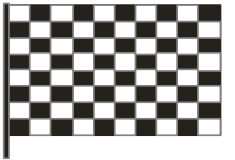
**Surface Condition Flag** – Caution! Oil or some kind of debris may be on the track surface or a slippery condition may exist. Typically only shown for 2 laps.



**White Flag** – Emergency vehicle or slow moving vehicle on track.



**Mechanical Black Flag (meatball flag)** – There may be something wrong with your car. Proceed to the hot pits at a reduced speed. If in limp mode, point other drivers by.



**Checkered Flag** – Session is over. Complete current lap and exit into the paddock. Passing rules apply during checkered flag. HOD typically displays checkered flag in two locations. Be sure you know where they will be displayed.