



Morning Sound Check now available without a penalty or strike !!!

Great News...the newly updated sound policy from WRLS now includes sound checks from 8:45 to 9:00am without counting as a strike against you. Thank you for registering for the event at WRLS on Thursday July 22, 2021. The weather looks like it's going to be in the mid 60's which is a huge difference from last weekend at Thunderhill.

Please click on the link to review important policies regarding your day with HOD.

<https://www.hookedondriving.com/important-policies-and-forms>

Attached find:

[Paddock Layout Map](#) ~ [Event Schedule](#) ~ [WRLS Updated Sound policy](#) ~ [New Drivers What to Expect](#)

Event Logistics

- There will be limited paddock access on Wednesday from 6:00pm to 7:00pm only. You may drop off of trailers or cars during this period. No access to garages at this time.
- **There is no overnight camping in the paddock on Wednesday night.**
- Gate opens at 7:00am on Thursday morning for all drivers.
- At the gate the track will give you a wristband that you must wear for the day.
- Paddock entry is limited to drivers registered with Hooked On Driving for the day. If you have someone bringing in your car, I will need to have their name in advance of the date. People not registered with HOD will not be allowed into the paddock. We will be using a gate list, which will go to the track on 7/20/21. Please reply back to this email with their information.
- Please read the new sound policy from WRLS attached.
- Our rental period is from 6:30am to 6:00 pm. HOD clients and staff must be out of the paddock by 6pm. If you have a mechanical issue and can't get your car out by then, please let us know so we can help you make arrangements with the track staff.

- SCCA has the paddock on Thursday night, so if you are registered with us on Thursday, and with SCCA on Friday, you may leave your car/trailer in the paddock overnight.
- Check-in will be in garages 23 - 24. At check-in, all drivers will be given your wristband, name tag, run group letter, lunch ticket and a schedule. If you paid online for car numbers, you will get them near this location. If you pre-paid for a guest lunch, pick it up at check-in.
- HOD will be providing water. It will be set out so that you can grab and go. If you prefer ice cold water, we recommend you bring a cooler with ice for yourself. It's good to bring yourself a chair as well.
- Helmets must be SA rated and be 2010 or newer. **NO motorcycle helmets.** If you don't have a 10 or 15 HOD sticker yet, please bring your helmet to check-in for inspection. Rentals available for \$30 for the day. We now also have HANS devices for rent.
- If you have a tow hook, install it prior to going on track.
- All cars must have 6-inch numbers on each side. HOD will have numbers available (\$5 for a set). Already have numbers? Prefer bringing blue tape? You are good to go!
- **No alcohol is to be consumed before the final checkered flag... no exceptions.**

We are working with A Train's BBQ for lunch. There is limited seating available near the cafe. Lunch will be served starting at 11:30 to 1:30. If you are done with your morning track sessions, head on over to get your lunch so that everyone can grab a seat while eating. Guests may purchase directly from the cafe as well.

Thank you on behalf of David Ray and the HOD Team!

If you have **any** questions about the event, feel free to email or give me a call. We look forward to seeing you at the track!!!

Teri Barrett

Operations Manager

Ph (707) 495 0374

Fax (707) 762 9113

terib@hookedondriving.com

PO Box 2966, Petaluma, CA 94953-2966

<https://www.hookedondriving.com>



Head and Neck Restraint Requirement

As of 1/1/19, HOD nationally, requires FIA or SFI certified Head and Neck Restraints for any drivers and/or passengers in cars equipped with 5 or 6 -point harnesses during an HOD event. This does NOT apply to cars utilizing stock, 3-point seat belt systems. |

Currently, approved head and neck restraint systems are:

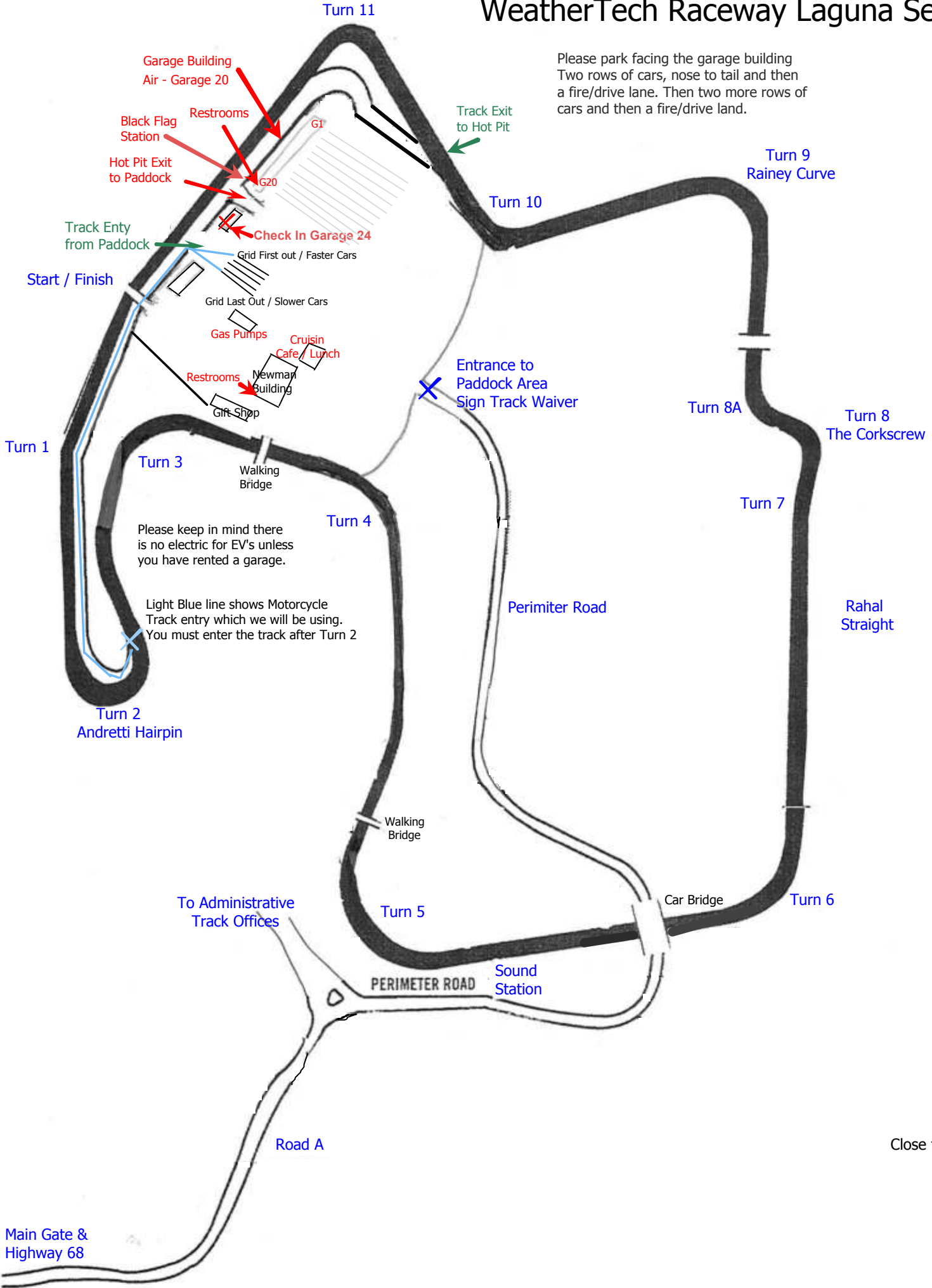
- NecksGen
- HANS
- Simpson Hybrid S
- Schroth SHR Flex
- Stand 21 Ultimate, Hitech, and Club Series
- Z Neck Tech (Zamp)

HOD will not require or prohibit the use of these systems with 4-point harnesses, and notes that the Schroth ASM 4-point system is the only one certified as proven to provide anti-submarining protection. Further, the Simpson Hybrid S is currently the only system that has been certified to provide restraint functions with 3-point, 4-point, as well as 5 or 6-point systems.

There will be a one event grace period for those who did not get this notice.

WeatherTech Raceway Laguna Seca

Please park facing the garage building
Two rows of cars, nose to tail and then
a fire/drive lane. Then two more rows of
cars and then a fire/drive land.



Please keep in mind there is no electric for EV's unless you have rented a garage.

Light Blue line shows Motorcycle Track entry which we will be using. You must enter the track after Turn 2

Close to Scale

Main Gate & Highway 68

Thank you for choosing Hooked On Driving! This page should give you a good idea of What to Expect when you arrive at WeatherTech Raceway Laguna Seca

- There is no power available at the track, unless you rent a garage, and anyone plugging into a power elsewhere on the property could have their car towed by the track. The track at this time doesn't have a place to charge electric vehicles, unless you rent a garage and have the proper converters.
- It is best to arrive with a full tank of gas. You will use a lot during the day. Gas is available at the track, but is more expensive than at gas stations. Watch your gauge during the day, if you are much below ½ tank, it's a great idea to fill up. Please do not run out of gas on the track!!!
- Follow the entrance from Highway 68 up the hill. At the fork, just past campgrounds, keep right. The entrance to the paddock is farther into the park. When you arrive at the paddock gate you will be met by a track employee and ask you and your guest to sign a track waiver. There is no charge at the gate and this waiver is just for the track.
- Once the waiver is signed you will be directed into the "paddock" which is really just the parking lot. You will see how other cars have parked or you can ask one of our meet and greet teams with yellow shirts and big smiles to help you find a spot. They can also answer any questions you might have. Driver check-in will be the garages.
- After you park you will want to empty your car of all loose gear. Some folks bring a plastic tub and place their gear in it. Your gear will be OK for the day, just on the ground near your car. You will be parked 2 cars nose to tail then a drive/fire lane, then another row of 2 cars nose to tail and another drive/fire lane. Someone will be around to help you out with this.
- Next you should bring in your helmet to check-in if bringing your own. If you have one with a 10 or 15 HOD sticker, you do not need to bring it to check-in. If you have not completed the E-Signature forms online, you will be asked to complete a self tech sheet for today's event. Check out the HOD website, top right corner, will be your account to make sure you have completed the annual waiver and e-signature car inspection forms before coming to the track.
- **NOTE:** Your helmet must be a SA2010 or newer helmet. NO "M" (motorcycle) helmets are allowed. SA2010 will be good through the end of 2021. After that must be SA2015 or newer.
- At check-in, you will get your run group letter, a lunch ticket and your driver's wristband. Schedules, track maps, flag review sheets are all available at the check-in desk.
- 6" numbers are required on both sides of your car. Vinyl numbers are available from HOD for \$5/set. If you prefer to bring blue tape and do it yourself... all good!

- When you get back to your car, place the number and letter stickers on the outside, upper passenger side of your windshield. See other cars in the paddock for guidance for placement if needed.
- Don't forget, windows must be down whenever you are on the track.
- Check your event schedule for the time of the all drivers meeting and location. This may change from track to track, so find out before, so you're not late. When you get to this meeting, your car should be 100% ready to go on track, car empty, stickers on windshield, your wristband. Individual group meetings will break out from the all drivers meeting. Most group leaders will let you know when there are going to be downloads. Please check with them to verify.
- There are different passing rules for each run group. Your group lead will be very specific on where those zones are, and how we run our passing protocols.
- After you've completed your track session, your group lead will let you know about download meetings. These happen immediately after your driving session.
- The grid is where you will line up before heading out on track. HOD releases the faster, more experienced drivers first. At WRLS this is the right side row. The far left will be the last to be released on track. You can arrive at the grid after the run group before you have departed.
- Lunch for the registered driver is included in your registration fee. Lunch starts at 11:30 and ends about 1:30. If you are done with your morning track sessions and downloads, head over to the cafe. Be sure to bring your lunch ticket.

Our goal is for you to have fun, learn about your car and to be safe. If you have concerns, ever, about anything, please speak to your group leader, or Teri Barrett, Operations Manager and we will do what we can to make it right!

We hope you have a blast with Hooked On Driving! A day or two after the event, expect an email from us with a link to our Quality Control Survey. Please take a few minutes and tell us if we met your expectations.

Thank you!!!

WeatherTech Raceway Laguna Seca

Group A and B

All Passes on the Left

Point-By Required, One for Each Car

Passing Zones: T11-1, T4-5, T5-6, T6-7, T10-11

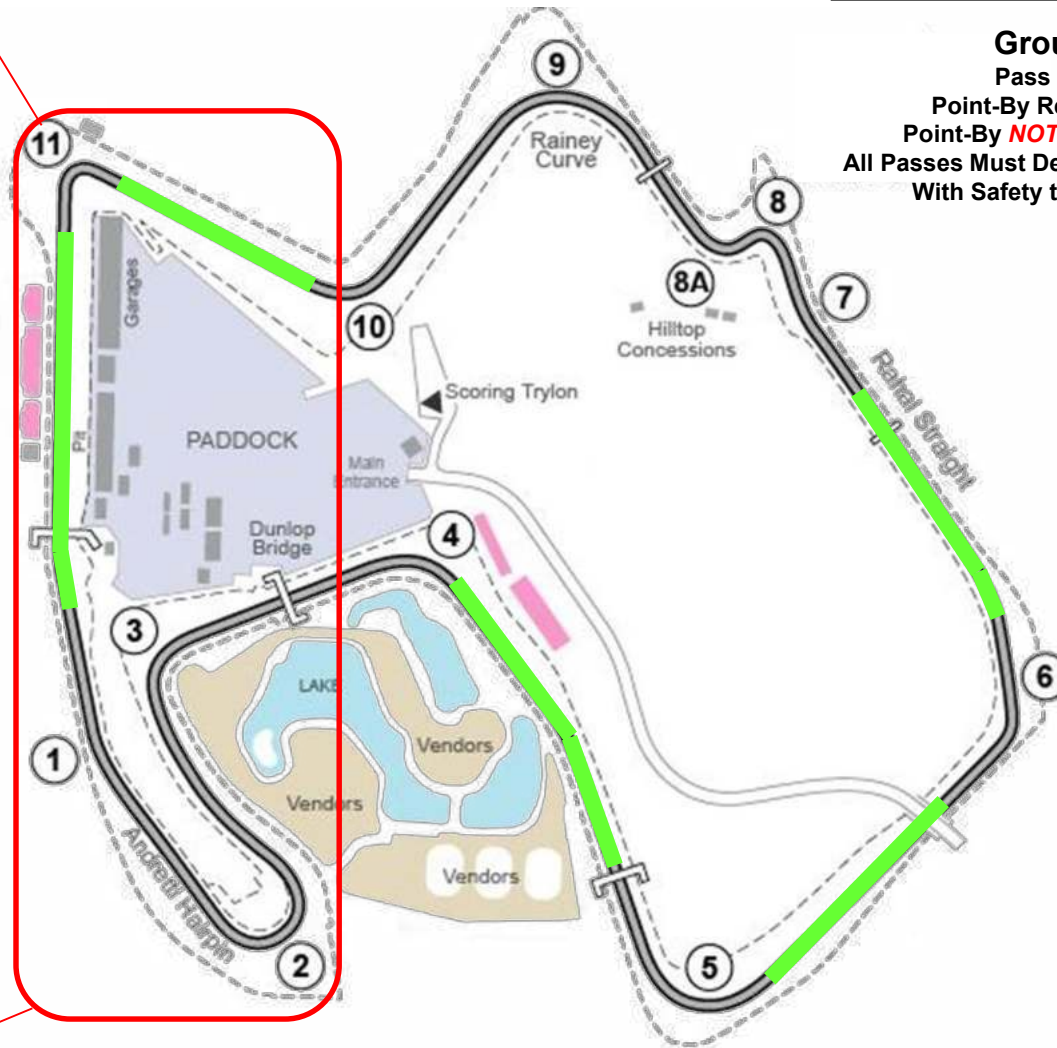
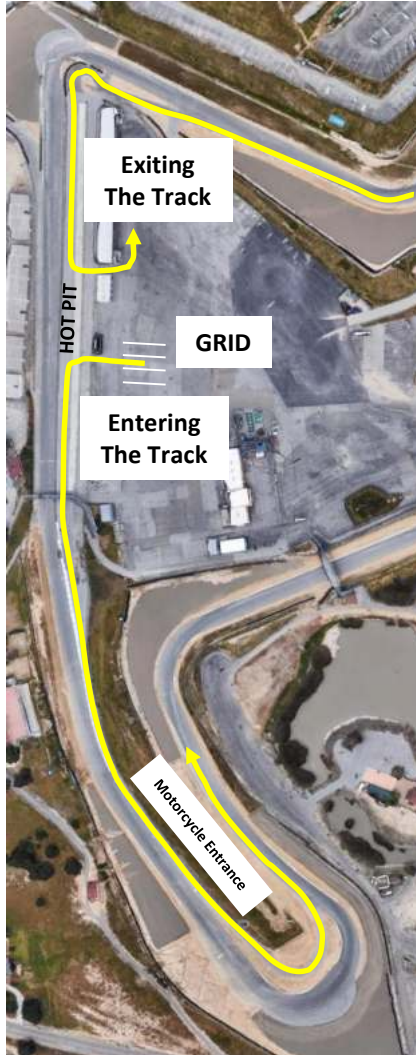
Group C and D

Pass on Either Side

Point-By Required for Group C

Point-By **NOT** Required for Group D

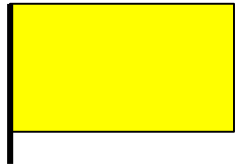
All Passes Must Demonstrate Good Judgment
With Safety the Over-riding Factor



Flag Review



Green Flag - Track Open



Standing Yellow Flag – ABSOLUTELY NO PASSING until completely passed the incident and a manned flag station with no Yellow flag. There may be several yellow flags before the incident. SLOW DOWN, NO PASSING.

Waving Yellow Flag – Caution, incident is very near. Slow down, be prepared to stop. ABSOLUTELY NO PASSING until completely passed the incident and a manned flag station with no Yellow flag.



Black Flag Waving at YOU – Return to hot pits to talk with HOD official.

Furled Black Flag – Warning that YOU are driving in an unsafe manner and that you need to maintain control.

Black Flag Waving at ALL Stations – Clear the track, complete the lap and return to the hot pits for instructions.



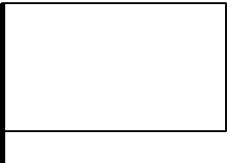
Red Flag – Emergency! Come to an immediate and controlled stop on the side of the pavement in a safe location and in view of a manned flag station. Emergency vehicles will be on track. NO CREEPING, stay stopped and remain in car with helmet and belts on until instructed to continue by a flagger, usually with a waving black flag. Continue with extreme caution.



Passing Advisory Flag – A faster car is approaching you and may want to pass. Check your mirrors and be prepared to allow a pass. Some run groups have specific passing zones and some groups require a point-by to pass. Be you know the passing rules for your run group.



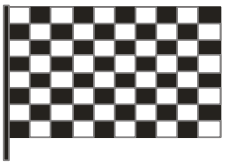
Surface Condition Flag – Caution! Oil or some kind of debris may be on the track surface or a slippery condition may exist. Typically only shown for 2 laps.



White Flag – Emergency vehicle or slow moving vehicle on track.



Mechanical Black Flag (meatball flag) – There may be something wrong with your car. Proceed to the hot pits at a reduced speed. If in limp mode, point other drivers by.



Checkered Flag – Session is over. Complete current lap and exit into the paddock. Passing rules apply during checkered flag. HOD typically displays checkered flag in two locations. Be sure you know where they will be displayed.



Revised Black Flag Policy (Effective July 15, 2021)

- The noise level of vehicles on track shall not exceed the agreed upon decibel level per the Track Rental Agreement. HOD dates are 90db.
- The methodology and equipment used to measure sound levels shall be at the discretion of LSRA Management and/or the County of Monterey.
- Vehicles that violate the sound limit will be black flagged and disqualified for the remainder of the session allowing for mechanical adjustments/repairs to be made.
- Vehicles who fail to pit after receiving a black flag and violates the sound limit during the lap, it will be assessed a second black flag. **This will mean 2 strikes against the car/driver.**
- Any vehicle that violates the sound limit three (3) times will be disqualified for the remainder of the day. If the same vehicle violates the sound limit on any following rental days, that vehicle will be disqualified for the remainder of the rental dates.
- If any vehicle continues to operate at a higher than the maximum sound level after receiving three sound violations, the Track Rental Agreement may be revoked with all track activity cancelled. Neither the County of Monterey nor LSRA Management shall be obligated to refund any portion of the fees paid.
- The dB level for the day is in effect for all locations within the park.
- Any vehicle producing a sound reading exceeding 100dB on a 90 or 92dB limit day will be disqualified for the remainder of the day, first strike.
- Vehicles will be allowed one (1) sound check per day at TRS discretion. Vehicles in violation during a sound check will be black flagged and required to pit, but it will not be assessed as a strike.
- Sound checks can be made available daily from 8:45am – 9:00am during the rental period. If a vehicle reads above the rental's agreed decibel level, the vehicle must make modifications and be cleared through tech.
- Any group session receiving ten (10) or more sound violations within a session will be black flagged, as a group, forfeiting the remainder of their session.

- Any groups that have been disqualified for sound violations will be required to send each vehicle in violation through tech inspection in order to be allowed on track. Tech inspections will be performed by Grid personnel or Track Rental Supervisor, to ensure that mechanical modifications have been made, or alternate driving techniques will be employed, addressing the sound level violation.
- After a rental day reaches twenty (20) black flags, they are issued a warning, five (5) additional flags and track management at their discretion may cancel any remaining track time. No refund will be issued to renter.
- Renters consistently exceeding twenty (20) black flags per day will be required to rent higher dB days in the future.
- Following their rental dates, all renters (except unlimited sound days) will receive a copy of their sound records to better manage the sound violations generated by their respective clubs or groups.